

TB216



COMPACT EXCAVATOR

TAKEUCHI
Japanese for reliability

TB216 compact mini excavator

Takeuchi introduce the new TB216, 1.6 tonne mini excavator. A compact machine packed full of proven Takeuchi features.

The TB216 replaces one of the most popular models in the Takeuchi range - a favourite with tool hirers, utilities, jobbing builders and ground workers.

Designed for maximum dig depth and dump height the new TB216 has excellent working ranges and a powerful engine for 1.6 tonne machine weight class.



ROBUST FOR SITE

The top mounted hydraulic boom cylinder and internally routed hoses helps avoid potential site damage.

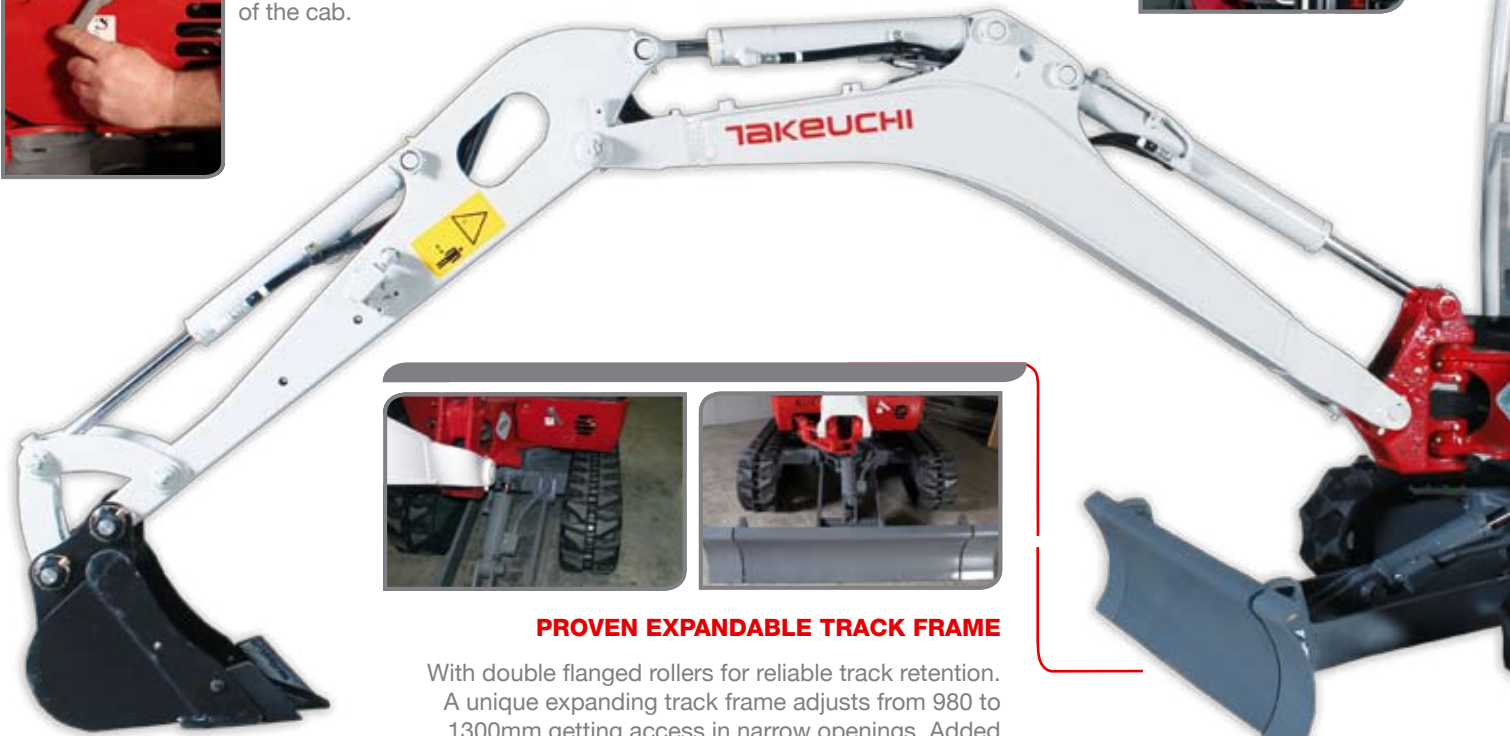


Simple lever from single to dual flow at the front of the cab.

OPERATOR COMFORT

The large best in-class spacious cab has an easy gas strut assisted window, simply slides into the roof space.

Large adjustable arm rests help minimise operator fatigue.



PROVEN EXPANDABLE TRACK FRAME

With double flanged rollers for reliable track retention. A unique expanding track frame adjusts from 980 to 1300mm getting access in narrow openings. Added track width gives greater operating stability.

The TB216 is a very well protected mini digger built for the toughest site conditions.

Operators enjoy the smooth operation and powerful digging force from a compact portable machine.

With a maximum dig depth up to 2390mm and dump height of 2705 alongside a maximum reach at ground level as far as 4035mm the TB216 outperforms for its compact size.

Precise proportional control valves achieve the smoothest digging operation vital in critical dig sites working around live cables and pipes.

A 1.6 tonne Takeuchi has become the most popular choice of digger for all types of application - landscaping, utilities, groundworks and street works.

With a reputation for reliability, Japanese build quality makes all the difference.



ENHANCED VISUAL DISPLAY UNIT

Enhanced VDU displays key operator information and machine maintenance alerts.



EASY ACCESS & MAINTENANCE

Service door for easy radiator access, fuel filter and maintenance. The battery is positioned below the seat.

Takeuchi have introduced simple quick release side panels getting maximum access.



PERFORMANCE

- Proven strong track frame design offers excellent balance and stability with a longer than average track frame (1520mm).
- Simultaneous operation of cab swing and digging function, and gives two-speed travel gives fast cycle times.
- Auxiliary hoses are easy to attach and well positioned high up the dipper arm or added protection.

OPERATION

- Added offset position RH 80° and LH 50°.
- Cushioned main boom and swing cylinders for smooth operation.
- Boom and cab mounted work light give options for all types of working conditions.
- Well positioned enhanced VDU - warning indicators, rpm, hour meter, fuel, battery charge, temperature, oil pressures and maintenance alerts.

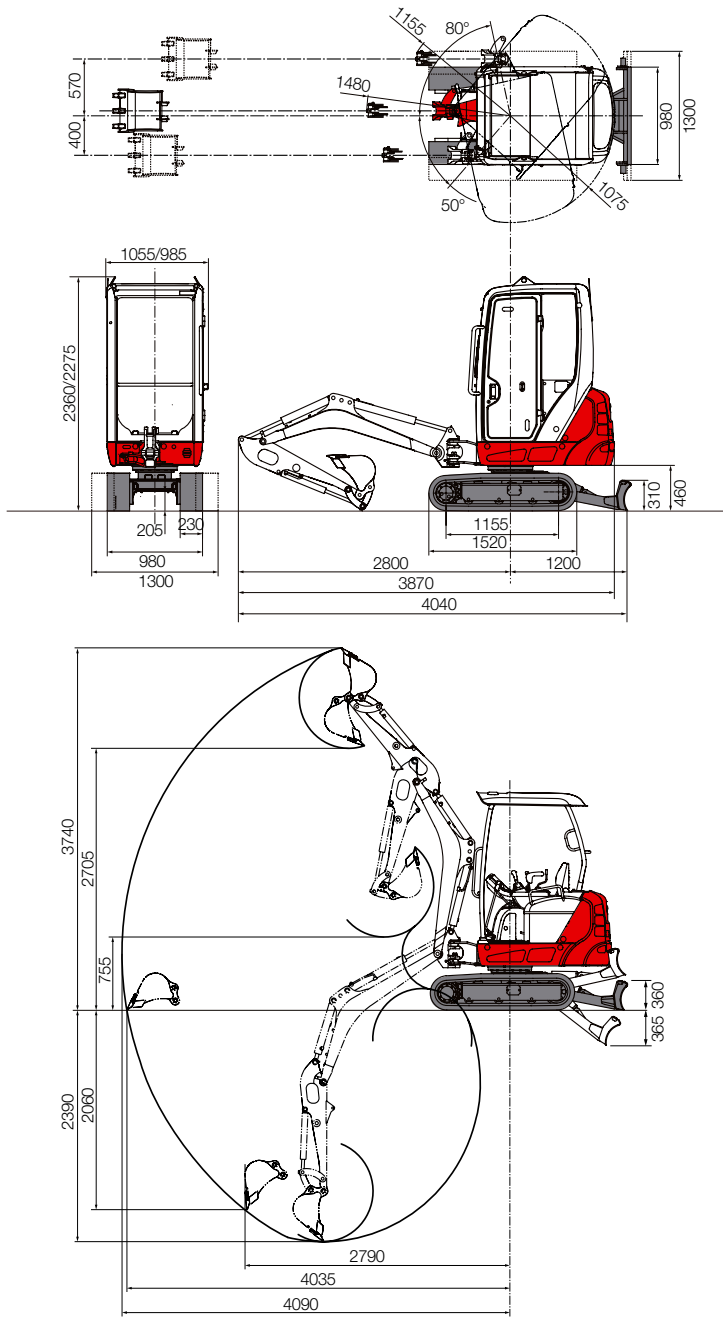
SAFETY & SERVICE

- Enhanced 100% steel wraparound frame protects key components. Flat glass panels make replacement an affordable option.
- Standard service features include; Safe Drain engine oil system, hydraulic and fuel gauges in cab and at filler, fuel drain system, hydraulic oil cooler, maintenance-free battery.

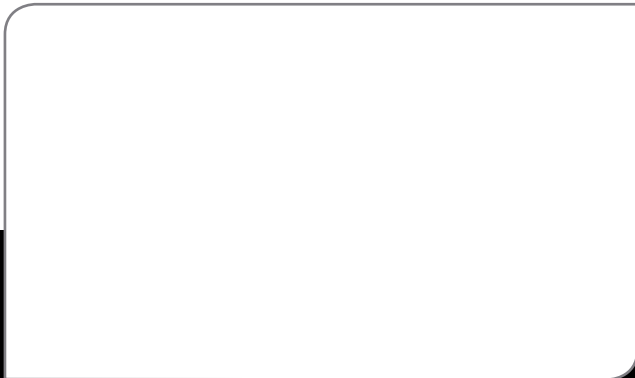
OPTIONS

- TKB52-S Breaker
- Auger
- Quick Hitch
- Bucket sizes from 150-1000mm





call us direct, or contact:



Takeuchi Mfg (UK) Ltd, Unit E2B Kingsway Business Park,
John Boyd Dunlop Drive, Rochdale, Lancashire OL16 4NG
Tel: 01706 657 722 Fax: 01706 657 744

Southern Depot at 20 Colthrop Business Park
Colthrop Lane, Thatcham, Newbury, Berks RG19 4NB
Tel: 01635 877 196 Fax: 01635 877 195

www.takeuchi-mfg.co.uk Email: sales@takeuchi-mfg.co.uk

TB216

Standard UK Specification - Long Dipper

Engine	
Make	YANMAR
Model	3TNV
Rated Output (kW)/rpm	11.5/12400
Maximum Torque (Nm)	52.7
Cylinders	3
Displacement (cc)	993
Electrical System	12V

Dimensions & Weight	
Operating Weight inclusive of bucket and fuel: cab/canopy (kg)	1800/1680
Overall Length (mm)	3870
Width cab/canopy (mm)	1055/985
with extended track (mm)	1300
Height cab/canopy (mm)	2360/2275
Ground Clearance (mm)	205
Min. Front Swing Radius (mm)	1480
Tail Swing Radius (mm)	1075
Dozer Blade (W x H) (mm)	900/1300 x 310

Operating Information	
Max Digging Depth (mm)	2390
Max Dump Height (mm)	2705
Max Reach at Ground Level (mm)	4035
Max Vertical Digging Depth (mm)	2060
Max Bucket Digging Force (kN)	14
Max Arm Digging Force (kN)	8.2

Hydraulic System	
Set Pressure (bar)	210
Pump Type	Variable
Hydraulic Flow Aux Port (l/min)	33

Swing System	
Boom Swing Angle (R/L)	80°/50°
Slew Speed (rpm)	9.2
Slew Motor	Trachoid Gear

Undercarriage	
Traction Motor	Piston
Traction Drive	Epicyclic Gearing
Traction Brake	Friction Brake
Traction Width (mm)	230
Ground Contact Length (mm)	1155
Ground Pressure (kpa)	31
Travel Speed (km/h)	2.2-4.2
Maximum Gradeability	30°

Capacities	
Hydraulic System (l)	24.5
Fuel Tank (l)	22
Engine Lubrication (l)	4.3
Cooling System (l)	3.8

All dimensions unless otherwise stated are in millimetres.

01/2014

Takeuchi machines come with a 2 year/2000 hours warranty as standard. Warranty exceptions to 1 year; fuel injection systems, electrical components, paint work.

In accordance with our established policy of constant improvement, we reserve the right to amend these specifications at any time without notice. Photographs shown may feature non-standard equipment.

TAKEUCHI
Japanese for reliability